

Enabling R&D of New Drugs in Ophthalmology

The Ophthalmic Platform of TriApex Laboratories consists of multiple teams supporting preclinical and clinical efficacy and safety evaluation in drug R&D. Our scientific team members, state-of-the-art instruments, project operation experience, quality control system, as well as large-scale NHP population, enable us to help the rapid translation of innovative ophthalmic drug molecules into clinical application.



Ophthalmology Platforms

Ophthalmic disease models

Ophthalmic bioanalysis

Ophthalmic pathology/imaging analysis

Non-clinical safety evaluation

Ophthalmic clinical phase I-II-III trials

Ophthalmic drug registration

Ophthalmic Disease Models

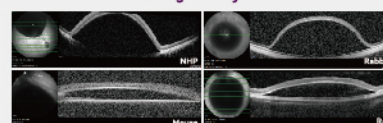
Induced models

- Laser-induced CNV
- Laser/beads-induced ocular hypertension
- Drug-induced CME
- Drug-induced long-term vascular leakage of the retina
- Blue light-induced retinal geographic atrophy
- Cell-induced PVR
- Laser-induced BRVO
- Induced dry eyes
- Induced pterygium
- Induced corneal neovascularization

Spontaneous models

- Ocular hypertension
- Dry eyes
- Age-related cataract

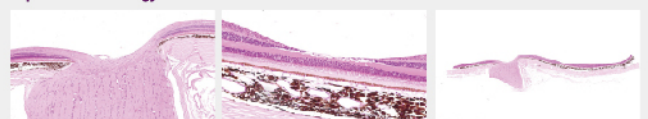
> Accurate Intra-ocular Drug Delivery



> DL-AAA Induced Cystoid Changes



> Experienced Pathology Examinations



Ophthalmology Technology, Operation, Expertise and Quality



Skills and Experiences

Ocular Administration

- Eye drop
- Subconjunctival injection
- Anterior chamber injection
- Intravitreal injection
- Subretinal injection
- Suprachoroidal injection

Ophthalmology Examination

- Slit lamp
- Ophthalmoscopy
- Ocular pressure (awake or anesthetized animals)
- OCT
- OCTA
- Fundus photography
- Fundus angiography
- Electroretinography (ERG)
- A/B ultrasound
- Optical Biometry
- Pupilometer
- Dry eye detector device

Bioanalysis

- Isolation and collection of different eye tissues
- Analysis of macromolecule (antibody drug, AAV-GOI, ADA, etc.)
- Analysis of micromolecule (chemicals, siRNA, etc.)
- Analysis of ocular biomarkers in the tear, aqueous humor, vitreous
- In vitro melanin binding assay

Ophthalmology Pathology Analysis

- Eyeball fixation and trimming (e.g. laser spots)
- Histopathologic examination
- Immunohistochemical staining of cells
- Imaging analysis and quantitative analysis

Nonclinical Safety Assessment

Clinical Trials & Registration of Ophthalmic Drugs

1. Ophthalmic Project Experience

Integrated services: Regulatory affairs, phase I, II, III clinical trials.

Various test articles: Micromolecule, antibody, gene therapy, etc.

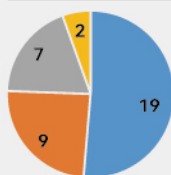
Wide range of indications: Corneal diseases, cataract, fundus diseases, hereditary retinal diseases, etc.

Diversified products: Eye drops, ocular injections, medical devices, etc.

2. Ophthalmic Clinical Cooperation Resources

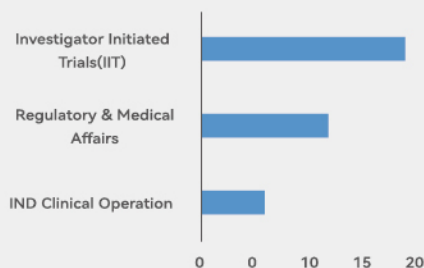
TriApex has established extensive and stable cooperation with high-level hospitals and enterprises.

Projects



- Fundus disease
- Gene therapy
- Ocular surface diseases
- Ophthalmology device

Clinical Trials



State-of-the-Art Instruments



BQ 900 Slit Lamp

— the highest standard for fiber grade of slit lamp in ophthalmology



Heidelberg SPECTRALIS OCT

— advanced multimodal imaging platform



Diagnosys Espion D315

— visual electrophysiology examination equipment



ZEISS CLARUS 500

— the next-generation fundus imaging system



ZEISS RESIGHT 700

— a new height of ophthalmologic operation microscope



Thanks for SUBSCRIPTION!

TRIAPEX LABORATORIES CO., LTD.

An innovative CRO enabling disease-oriented R&D

www.tri-apex.com

BD@tri-apex.com

+86 025-5819-6588

No.9 Xinglong Road, Nanjing Jiangbei New Area, Jiangsu, China, 211800