



TRIAPEX

AN INNOVATIVE CRO ENABLING
DISEASE-ORIENTED R&D





Thanks for SUBSCRIPTION!

TriApex takes focusing on scientific research, facilitating new drug R&D, and improving quality of patients' life as its own mission. Relying on the top technical service team in the industry, TriApex builds and improves group management, focuses on the pathogenesis and models of diseases, nonclinical research, and clinical and translational research by means of highly scientific and professional operation strategies.

TriApex, takes advantage of reliable service quality and abundant industry experience, facilitates innovation of technologies, leads industry innovation, and consistently forges ahead on the road to promoting human health development.

 www.tri-apex.com
 BD@tri-apex.com

 +86 025-5819-6588
 No.9 Xinglong Road, Nanjing Jiangbei
New Area, Jiangsu, China, 211800

TriApex Laboratories Co., Ltd.

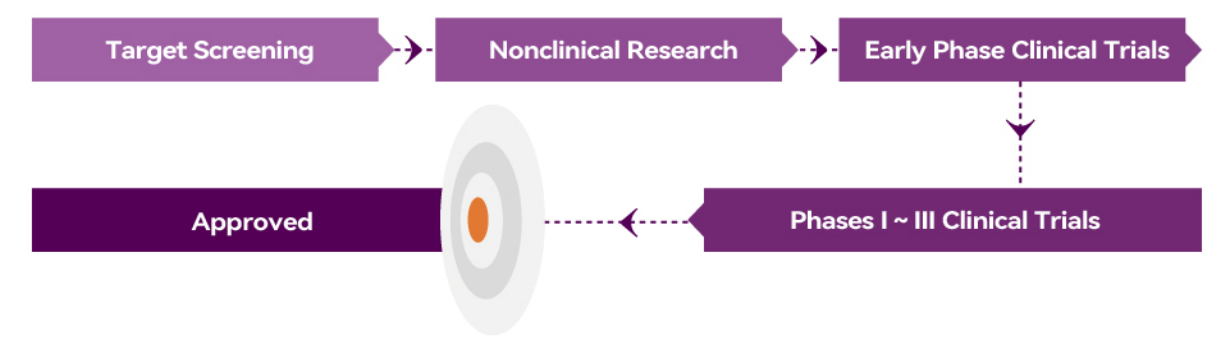
01 | GROUP PROFILE

TriApex
An innovative CRO dedicated to providing integrated solutions enabling the specialized disease-oriented R&D for global pharmaceutical enterprises and research institutions.



03 BUSINESS ADVANTAGES

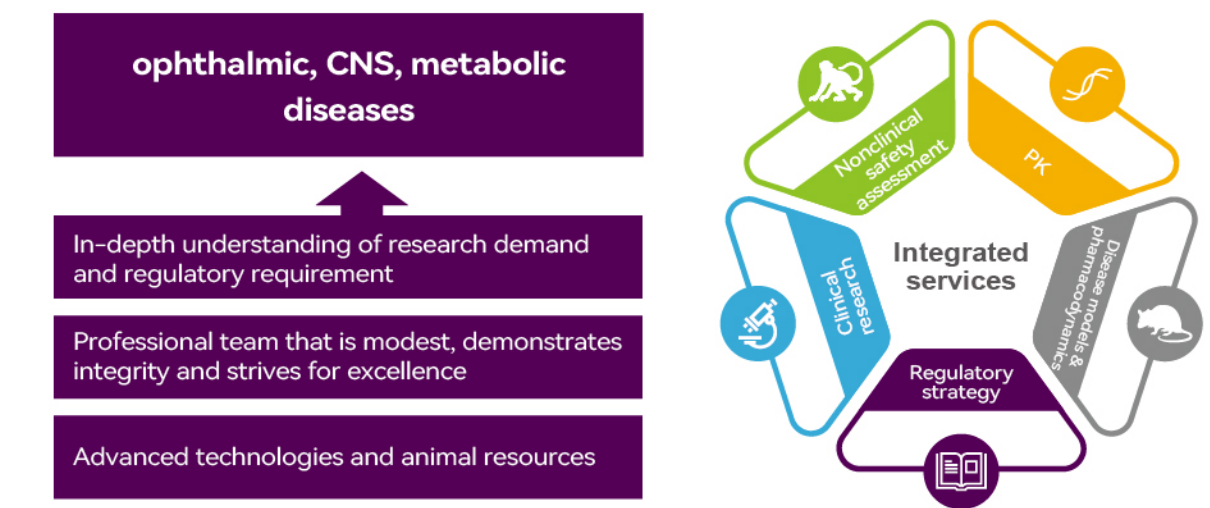
Core Service Capabilities



Science-based & Regulatory strategy-oriented

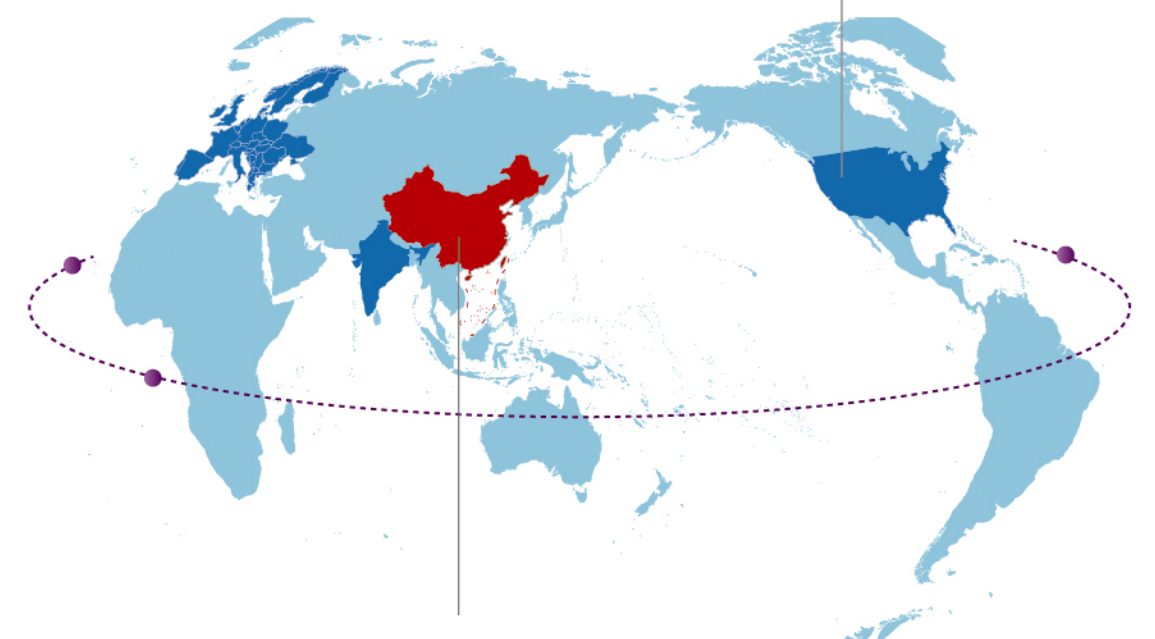
Disease Models and Pharmacology Services	Regulatory Strategies and Safety Assessment	Clinical and Laboratory Services
<ul style="list-style-type: none"> ^ NHP models ^ Preliminary pharmacodynamics ^ Mechanism of action ^ Concept validation 	<ul style="list-style-type: none"> ^ Pharmacokinetics ^ Safety assessment, GLP <ul style="list-style-type: none"> · Drug · Medical device 	<ul style="list-style-type: none"> ^ Clinical trials ^ Laboratory Services <ul style="list-style-type: none"> · Bioanalysis · Biomarker · Center Laboratory

Enabling integrated disease-oriented R&D



02 GROUP LAYOUT

Overseas
North America, Europe, etc.



China

- Nanjing, ~ 44,000 m² Nonclinical labs (GLP), laboratory animal resource base, clinical research center
- Shanghai, ~ 14,000 m² Clinical biological samples lab, nonclinical medical device lab, central lab
- Kunming, ~ 120,000 m² NHP experimental base
- Hainan, ~ 120,000 m² NHP experimental base
- Chengdu, Professional ophthalmology clinical team

04 RESOURCE ADVANTAGES

TriApex has equipped with top technical service teams, professional discipline platforms, first-class instruments and equipment. We take focusing on scientific research, facilitating new drug R&D, and improving quality of patients' life as its own mission.

Animal Model Resources



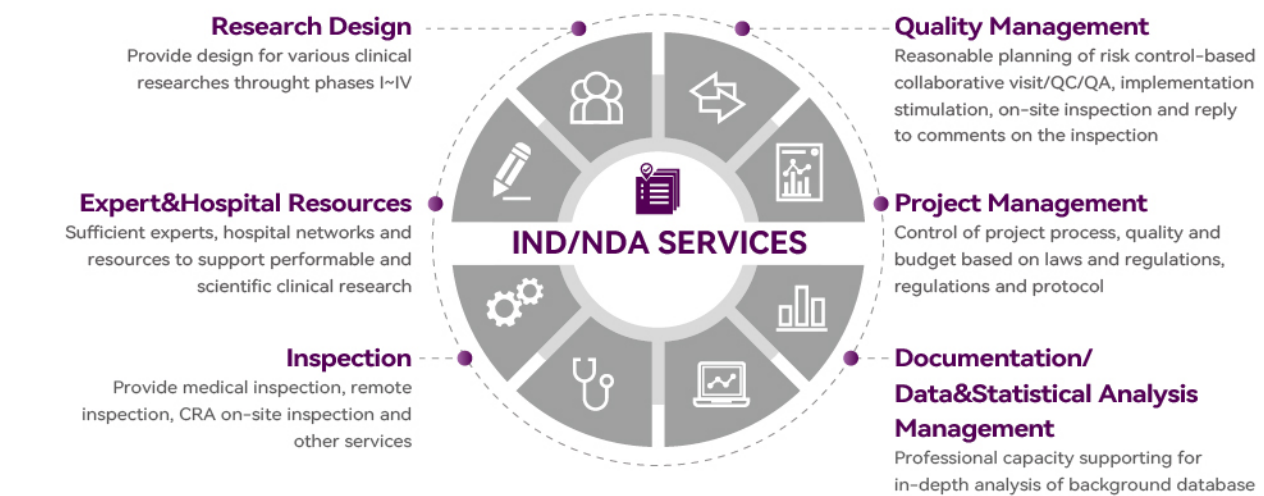
05 PROJECT EXPERIENCES

- Primary Pharmacology**
 - ^ Fields: ophthalmic, central nervous system, metabolic diseases, etc.
 - ^ Enabling clinical translation, lowering the R&D costs.
- Pharmacokinetics**
 - ^ Robust method development, validation and sample analysis.
 - ^ Supporting clinical development and IND/NDA submission.

- Safety Evaluation**
 - ^ Regulatory compliance: capable of performing GLP studies in compliance with NMPA/FDA/OECD GLP guidelines.
 - ^ Technological accumulation: expertise and experience in conducting safety research of drugs and medical devices.
 - ^ Wide range of product experience: over 500+ biologics and NCEs (including innovative new modalities) that have advanced to various stages of approval.

Gene therapy	Oncolytic virus	Peptide
Small nucleic acid drugs	ADC	Nano-drug
Cell therapy	mAb/bispecific antibody	Innovative chemical drug

06 REGULATORY STRATEGY & CLINICAL TRIALS



07 COOPERATION PARTNERS

